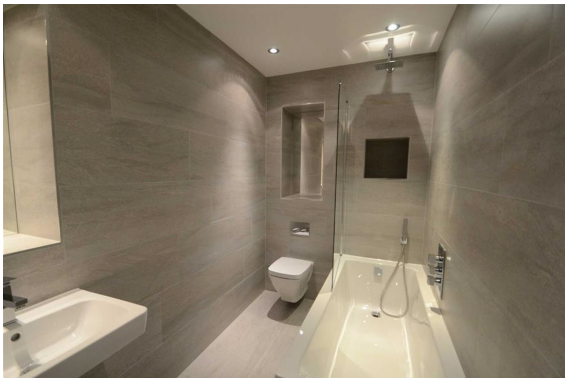
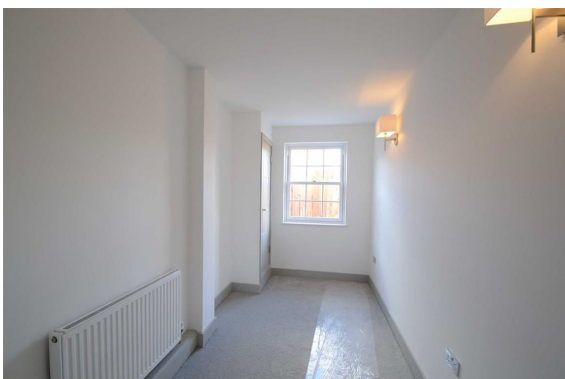




- Newly Refurbished
- Two Bedrooms
- Split Level Apartment
- Entryphone
- Porcelanosa Bathroom
- Kreider Kitchen
- Smeg Appliances
- Fitted Carpets to Bedrooms



A refurbished two bedroom split level apartment offering its own private roof terrace, Porcelanosa bathroom and Kreider fitted kitchen with Smeg appliances. This stunning apartment is just one in a collection of six bespoke apartments located in the heart of Bromley Town Centre. These exceptional homes have been finished to an exacting standard and offer unique and spacious accommodation.



You may download, store and use the material for your own personal use and research. You may not republish, retransmit, redistribute or otherwise make the material available to any party or make the same available on any website, online service or bulletin board of your own or of any other party or make the same available in hard copy or in any other media without the website owner's express prior written consent. The website owner's copyright must remain on all reproductions of material taken from this website.

Price: £400,000