

- Victorian Terraced
- Five Bedrooms
- Two Receptions
- Three Bathrooms
- 2606 SQFT
- Central Bromley Location
- Excellent Decorative Order
- Rear Garden



Having been given a complete makeover by the present owners, tastefully modernising whilst maintaining many of the original and unique period features, this five bedroom Victorian home is presented to the market in exquisite decorative order. Located in the heart of Bromley Town Centre just moments from many amenities we strongly advise your inspection of this deceptively spacious period property.

Ground Floor

Entrance Hall

Spacious entrance hall with striking Victorian geometric tiling throughout and decorative cast iron radiators. Entrance to the cellar under the stairwell.

Cellar

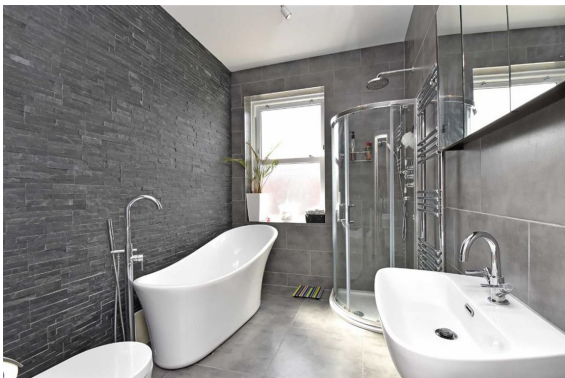
The cellar has approximately 7' ceilings and comprises of two rooms that could be converted into additional living accommodation.

Reception Room (17'2 x 15'5)

Solid oak floors, ornate cornicing, ceiling roses and the fitted storage units that flank the Victorian feature fireplace that is completely original and boasts unique V&A character tiles. Oak bi-folding doors lead to the dining room.

Dining Room (15'7 x 13'4)

Again featuring solid oak flooring, the formal dining room is accessed via the bi-folding doors or alternatively the entrance hall and kitchen. This impressive room boasts three Velux skylights via



the part vaulted ceiling and fitted furniture either side of the chimney breast.

Utility Room

Part utility room, part walk in shower, conveniently located off the dining room with access onto the rear courtyard.

Kitchen (17'10 x 12'4)

Solid oak flooring sets off the ivory high gloss units that are finished with solid wood worktops and splash backs. Appliances include a bank of two ovens, microwave and bean to coffee machine in addition to Range cooker and hood, dishwasher and fridge/freezer.

First Floor

Master Bedroom (15'11 x 14'8)

Vast space with original feature fireplace and fitted wardrobes.

Bedroom Two (13'6 x 11'11)

Feature fireplace with fitted wardrobe and storage cupboard.

Bedroom Five & W.C (12'4 x 10'8)

Fitted wardrobe and w.c off the landing.

Family Bathroom

Fully tiled with feature slate wall, roll top freestanding bath and walk in shower

Second Floor

Bedroom Three (18'3 x 14'5)

Fitted wardrobes and original fireplace.

Bedroom Four (13'7 x 12'3)

Fitted wardrobes and original fireplace.

Shower Room

Fully tiled with walk in shower, W.C and basin.

External

Courtyard garden that has been integrated into the accommodation by creating a useful garden room with composite grey decking, wrought iron fencing, jacuzzi, seating area and log cabin fully insulated and fitted out as a cinema room. Rear access.

Location

Located in the heart of Bromley town centre the property is well served by both Bromley North and South stations, an abundance of amenities, restaurants, bars and cafe's in addition to The Glades shopping centre. There are also a number of well regarded local state schools as well as various private schools of good repute.

You may download, store and use the material for your own personal use and research. You may not republish, retransmit, redistribute or otherwise make the material available to any party or make the same available on any website, online service or bulletin board of your own or of any other party or make the same available in hard copy or in any other media without the website owner's express prior written consent. The website owner's copyright must remain on all reproductions of material taken from this website.

Price: £995,000

23 High Street,
Bromley,
Kent,
BR1 1LG

Tel: 020 8464 5566