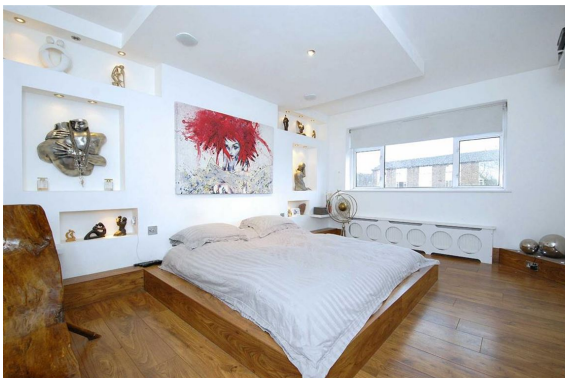




- Four Bedrooms
- Quiet Location
- Large Reception/Dining Room
- Modern Kitchen and Bathroom
- Garage
- Rear Garden



Situated in this quiet close overlooking a central green is this four bedroom semi-detached family home which benefits from gas central heating, double glazing, garage and garden. Internally, the accommodation is arranged as follows: to the ground floor; entrance hallway with guest cloakroom, reception room, dining room and fitted kitchen whilst upstairs there are four bedrooms and a stylish family bathroom. Externally, to the front there is off road parking and to the rear, a garden which is mainly laid to lawn. Ribston Close lies within the catchment of good local primary and secondary schools and is a short distance from Bromley town centre..



You may download, store and use the material for your own personal use and research. You may not republish, retransmit, redistribute or otherwise make the material available to any party or make the same available on any website, online service or bulletin board of your own or of any other party or make the same available in hard copy or in any other media without the website owner's express prior written consent. The website owner's copyright must remain on all reproductions of material taken from this website.

Price: £485,000