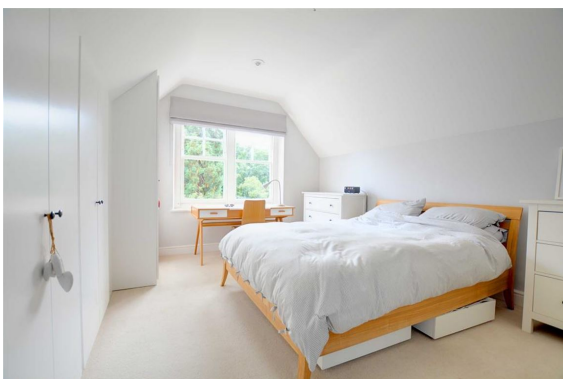




- Stunning Grade II Listed Building
- Top Floor Apartment
- Two Double Bedrooms
- Backing South Hill Wood
- 782 SQ FT
- Off Road Parking



Forming part of this impressive building that was the former home of Sir Thomas Dewey is this two bedroom top floor apartment. The grand entrance hall of the main house is an impressive sight and leads to; a light and airy hallway with fitted storage, spacious kitchen / living / dining room, two double bedrooms and the family bathroom. The property boasts stunning views over South Hill Wood which can be accessed from the bottom of the road. This popular location provides public transport links to Bromley South and is within proximity of excellent local schools. With the additional benefit of allocated parking off road, we strongly advise your internal inspection.



You may download, store and use the material for your own personal use and research. You may not republish, retransmit, redistribute or otherwise make the material available to any party or make the same available on any website, online service or bulletin board of your own or of any other party or make the same available in hard copy or in any other media without the website owner's express prior written consent. The website owner's copyright must remain on all reproductions of material taken from this website.

Price: £400,000